

to Stephen Layton and the Choir of Trinity College Cambridge

# Nunc Dimittis

Paweł Łukaszewski, 2007

**Adagio placido** ♩ = 60

*p sempre, lontano*

SOLOISTS

SOPRANO  
Do-mi-ne, (n) ————— Do-mi-ne, (n) —————

ALTO  
Do-mi-ne, (n) ————— Do-mi-ne, (n) —————

TENOR  
Do-mi-ne, (n) ————— Do-mi-ne, (n) —————

BASS  
Do-mi-ne, (n) ————— Do-mi-ne, (n) —————

**Adagio placido** ♩ = 60

CHOIR

SOPRANO  
Nunc di - mit - tis ————— ser-vum tu - um, Do-mi-ne, *pp*

ALTO  
Nunc di - mit - tis ————— ser-vum tu - um, Do-mi-ne, *pp*

TENOR  
Nunc di - mit - tis ————— ser-vum tu - um, Do-mi-ne, *pp*

BASS  
Nunc di - mit - tis ————— ser-vum tu - um, Do-mi-ne, *pp*

**Adagio placido** ♩ = 60

Piano  
(for rehearsal only)

6 2.

(n) Do - mi - ne, (n)

(n) Do - mi - ne, (n)

(n) Do - mi - ne, (n)

(n) Do - mi - ne, (n)

2.

*mf* *mp* 3

Do - mi - ne, se-cun-dum ver - bum tu - um in pa - ce, —

*mf* *mp* 3

Do - mi - ne, se-cun-dum ver - bum tu - um in pa - ce, —

*mf* *mp* 3

Do - mi - ne, se-cun-dum ver - bum tu - um in pa - ce, —

*mf* *mp* 3

Do - mi - ne, se-cun-dum ver - bum tu - um in pa - ce, —

2.

10

Do - mi - ne, (n) Do - mi - ne,

Do - mi - ne, (n) Do - mi - ne,

Do - mi - ne, (n) Do - mi - ne,

Do - mi - ne, (n) Do - mi - ne,

*mp* se - cun - dum ver - bum tu - um in pa - ce, (n) *p*

*mp* se - cun - dum ver - bum tu - um in pa - ce, (n) *p*

*mp* se - cun - dum ver - bum tu - um in pa - ce, (n) *p*

*mp* se - cun - dum ver - bum tu - um in pa - ce, (n) *p*

se - cun - dum ver - bum tu - um in pa - ce, (n)

14

Musical score for four vocal parts (Soprano, Alto, Tenor, Bass). Each part consists of a single line of music with a treble clef and a key signature of one sharp (F#). The lyrics for all parts are "(n)".

Musical score for the Soprano part. The lyrics are "Qui-a vi-de-runt o-cu-li me-i (n) sa-lu-". Dynamics include *mp* (mezzo-piano), *p* (piano), and *mf* (mezzo-forte). There are triplet markings over the first two measures.

Musical score for the Alto part. The lyrics are "Qui-a vi-de-runt o-cu-li me-i (n) sa-lu-". Dynamics include *mp*, *p*, and *mf*. There are triplet markings over the first two measures.

Musical score for the Tenor part. The lyrics are "(n) Qui-a vi-de-runt o-cu-li me-i". Dynamics include *p* and *mp*. There are triplet markings over the last two measures.

Musical score for the Bass part. The lyrics are "(n) Qui-a vi-de-runt o-cu-li me-i". Dynamics include *p* and *mp*. There are triplet markings over the last two measures.

Piano accompaniment musical score. It features a treble and bass clef with a key signature of one sharp. The piece includes several triplet markings and a melodic line in the right hand.

18

*mf* *f* *mp* *p*

— Do - mi-ne, Do - mi-ne, Do - mi-ne, Do - mi-ne,

*mf* *f* *mp* *p*

— Do - mi-ne, Do - mi-ne, Do - mi-ne, Do - mi-ne,

*mf* *f* *mp* *p*

— Do - mi-ne, Do - mi-ne, Do - mi-ne, Do - mi-ne,

*mf* *f* *mp* *p*

— Do - mi-ne, Do - mi-ne, Do - mi-ne, Do - mi-ne,

*f* *p sub.* *pp*

- ta - re tu - um, sa-lu - ta - re tu - um, sa-lu - ta - re tu - um, sa-lu - ta - re.

*f* *p sub.* *pp*

- ta - re tu - um, sa-lu - ta - re tu - um, sa-lu - ta - re tu - um, sa-lu - ta - re.

*mf* *p*

sa - lu-ta - re, sa - lu-ta - re, sa - lu-ta - re tu - um, —

*mf* *p*

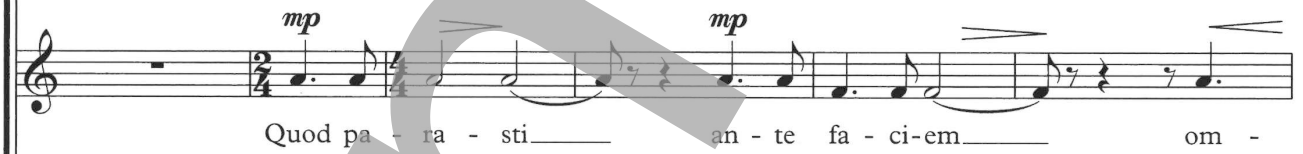
sa - lu-ta - re, sa - lu-ta - re, sa - lu-ta - re tu - um, —

—

22 **Comodo** ♩ = 80  
*mp*



**Comodo** ♩ = 80 *mp*



**Comodo** ♩ = 80



28 *mf* *f* *mf* *f* *mf*

Do - mi-ne, Do - mi-ne, Do - mi-ne,

Do - mi-ne, Do - mi-ne, Do - mi-ne,

Do - mi-ne, Do - mi-ne, Do - mi-ne,

Do - mi-ne, Do - mi-ne, Do - mi-ne,

*f* *mf* *f* *mf* *f* *mf*

-ni - um po - pu - lo - rum, om - ni - um po - pu - lo - rum.

-ni - um po - pu - lo - rum, om - ni - um po - pu - lo - rum.

-ni - um po - pu - lo - rum, om - ni - um po - pu - lo - rum.

-ni - um po - pu - lo - rum, om - ni - um po - pu - lo - rum.

*f* *mf* *f* *mf* *f* *mf*

## L'istesso tempo

32

*p* *delicatissimo al fine*  
 (n) Do-mi-ne,

*p* *delicatissimo al fine*  
 (n) Do-mi-ne,

*p*  
 (n)

*p*  
 (n)

## L'istesso tempo

*p*  
 Lu-men ad re-ve-la-ti-o-nem gen-ti-um, et glo-ri-am

*p*  
 Lu-men ad re-ve-la-ti-o-nem gen-ti-um, et glo-ri-am

*p*  
 Lu - men gen - ti - um, Lu -

*p*  
 Lu - men gen - ti - um, Lu -

## L'istesso tempo

*p*



36

Do-mi- ne, (n) *pp*

Do-mi- ne, (n) *pp*

(n) *pp*

(n) *pp*

ple - bis tu - ae Is - ra - el. Lu - men ad re - ve - la - ti - o - nem *pp*

ple - bis tu - ae Is - ra - el. Lu - men ad re - ve - la - ti - o - nem *pp*

- men gen - ti - um, Lu - men gen - ti - *pp*

- men gen - ti - um, Lu - men gen - ti - *pp*

*pp*

40

Do-mi- ne, Do-mi- ne,

Do-mi- ne, Do-mi- ne,

Do-mi- ne, Do-mi- ne,

Do-mi- ne, Do-mi- ne,

gen - ti - um, et glo - ri - am ple - bis tu - ae Is - ra - el.

gen - ti - um, et glo - ri - am ple - bis tu - ae Is - ra - el.

- um, Lu - men gen - ti - um,

- um, Lu - men gen - ti - um,

44

*ppp*

(n) \_\_\_\_\_ Do-mi- ne, Do-mi- ne,

*ppp*

(n) \_\_\_\_\_ Do-mi- ne, Do-mi- ne,

*ppp*

(n) \_\_\_\_\_

*ppp*

(n) \_\_\_\_\_

*ppp*

Lu-men ad re-ve-la-ti-o-nem gen-ti-um, et glo-ri-am

*ppp*

Lu-men ad re-ve-la-ti-o-nem gen-ti-um, et glo-ri-am

*ppp*

Lu - men gen - ti - um, Lu -

*ppp*

Lu - men gen - ti - um, Lu -

48

*pppp* poco a poco decresc. al fine, delicatissimo possibile

Do-mi- ne, (n)

*pppp* poco a poco decresc. al fine, delicatissimo possibile

Do-mi- ne, (n)

*pppp* poco a poco decresc. al fine, delicatissimo possibile

(n)

*pppp* poco a poco decresc. al fine, delicatissimo possibile

(n)

*pppp* poco a poco decresc. al fine, delicatissimo possibile

ple - bis tu - ae Is - ra - el. Lu - men ad re - ve - la - ti - o - nem

*pppp* poco a poco decresc. al fine, delicatissimo possibile

ple - bis tu - ae Is - ra - el. Lu - men ad re - ve - la - ti - o - nem

*pppp* poco a poco decresc. al fine, delicatissimo possibile

- men gen - ti - um, Lu - men gen - ti -

*pppp* poco a poco decresc. al fine, delicatissimo possibile

- men gen - ti - um, Lu - men gen - ti -

52

Do-mi- ne, Do-mi- ne.

Do-mi- ne, Do-mi- ne.

gen- ti - um, et glo- ri- am ple- bis tu- ae Is- ra - el.

gen- ti - um, et glo- ri- am ple- bis tu- ae Is- ra - el.

- um, Lu - men gen - ti - um.

- um, Lu - men gen - ti - um.